

## SQUEEGEE HOLDER / FLOOD BAR ORDER FORM

1. Select the product type, then choose your unit of measure.
2. Choose the material type for your squeegee holder or floodbar.
3. Select the manufacturer of your machine.
4. Measure your squeegee holder or floodbar, end to end, and provide the length (See Diagram A). If you are ordering a wing-tip floodbar, please measure along the crease, end to end, and *without the wings* (See Diagram A2).
5. Please indicate the number of the notches for your product. Then, for each notch, measure its' width, from end to end. By standard, all notches are 2" wide. Finally, measure from it's center, to the end of the squeegee holder or floodbar. (See Diagram B)
6. Specify quantity and part number (if known).

**We have made flood bars and squeegee holders for many different manufactures. By specifying the manufacturer, we are able to put our knowledge from years of experience in making specific replacement flood bars and squeegee holders for your machine..**

**Product Type:**

- Floodbar  
 Squeegee Holder

**Unit of Measure:**

- Inches  
 CM

**Material Type:**

- Aluminum  
 Stainless Steel

**Wing-Tip? (if ordering floodbar):**

- Yes  
 No

**Equipment Manufacturers**

- A.W.T.    American    Anatol    Argon    DeBuit  
 Exelon Printers    Filbar Presses    Lawson    M&M  
 M&R    MHM    Progressive    Sias  
 Svecia    Thieme    Tuf

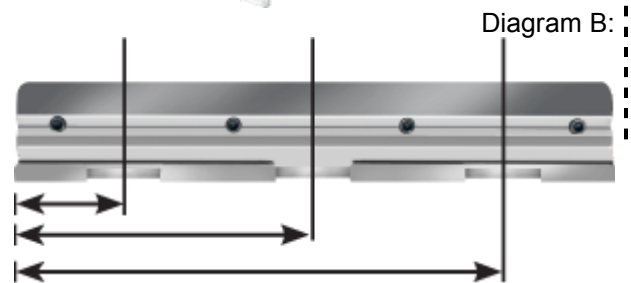
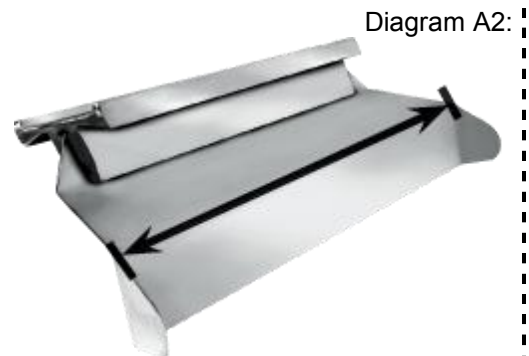
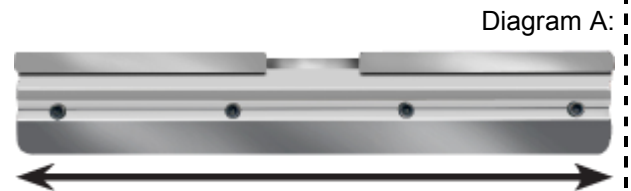
**Overall Length:**

**Number of Notches (3 max):**

	Width	Position
Notch #1:	<input type="text"/>	<input type="text"/>
Notch #2:	<input type="text"/>	<input type="text"/>
Notch #3:	<input type="text"/>	<input type="text"/>

**Qty:**

**Part No. (if known):**



**Customer Details**

NAME:

PHONE:

E-MAIL: