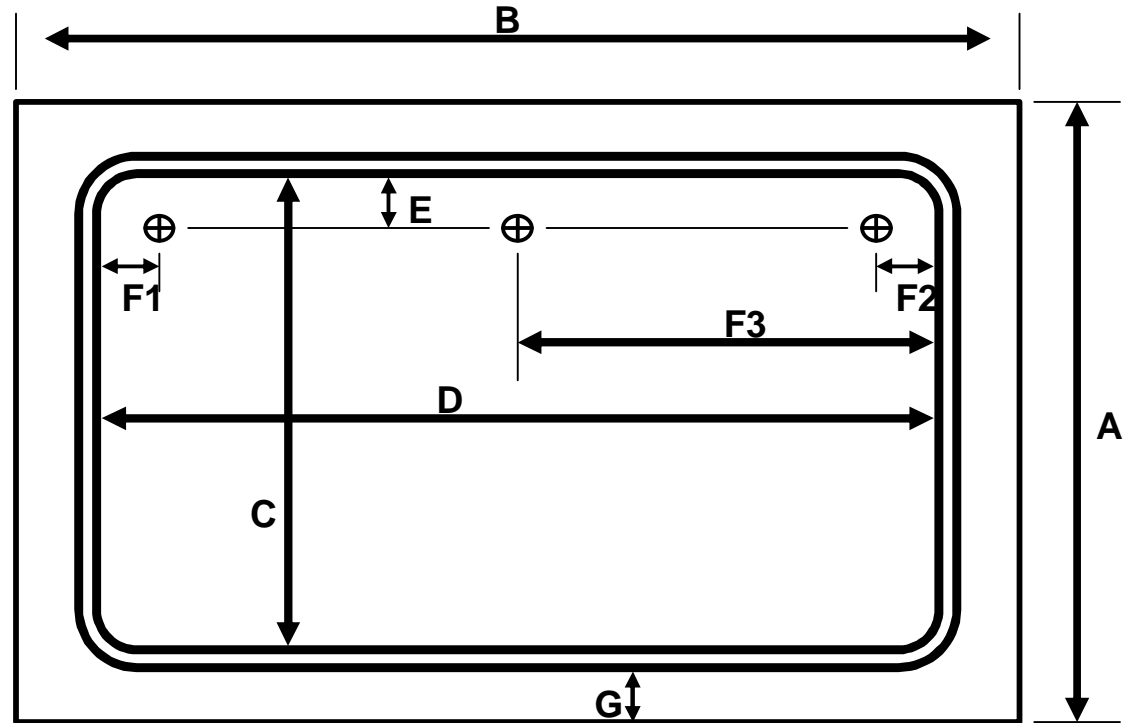


Custom Vacuum Blanket Quotation Request



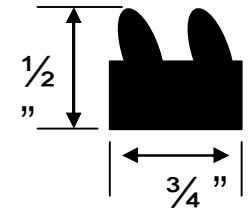
____" = A, Width outside
 ____" = B, Length outside
 ____" = C, Bead to Bead inside
 ____" = D, Bead to Bead inside
 NOTE: BE SURE TO ALLOW FOR THE BEAD WIDTH OF 3/4" IN YOUR MEASUREMENTS.
 ____" = E, Bead to valve center
 Bead to valve center F1, F2, or F3
 Select one for valve position
 ____" = F1 Left located
 ____" = F2 Right located
 ____" = F3 Centered
 ____" = G, Edge Distance



Select Blanket Type Below

- ____ Type 1/72 Black = Black synthetic rubber with high tensile strength, high tear strength, and very high elongation. Quick draw-down. Most Economical. 1/32" thick
- ____ Type 1HD/72 = Same material as above but increased thickness provides longer wear and less possibility of tearing. Smooth Finish. 1/16" thick
- ____ Type 1HD/72FF = Same as Type 1HD/72 except fabric finish added on one side to allow for faster air evacuation. 1/16" thick
- ____ Type 2 = Black sponge rubber on one side and blue nylon one side. Rugged nylon reduces tearing from the sharpest frame corners. 1/4" thick
- ____ Type 3 = Black synthetic rubber. Very economical for large blankets but does not have the high tensile, tear and elongation of the type 1 blankets. Not recommended for blankets that are smaller than 72" in one dimension. 0.045" thick

BEADING Cross Section



UV Process Supply
 1229 W. Cortland St.
 Chicago, IL 60614
 (773) 248-0099 / Fax (773) 880-6647
info@uvps.com / www.uvprocess.com